

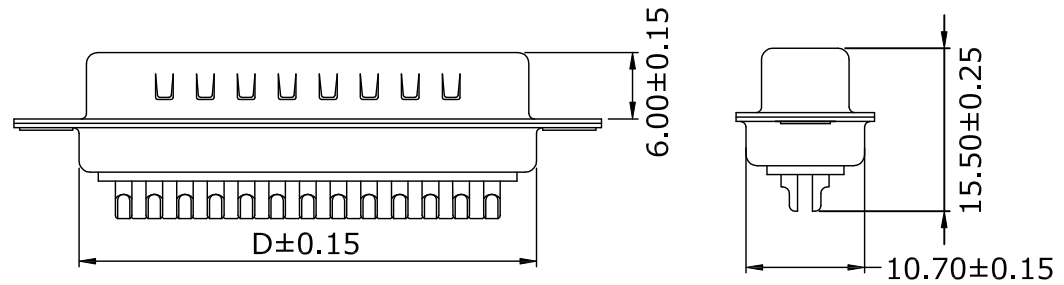
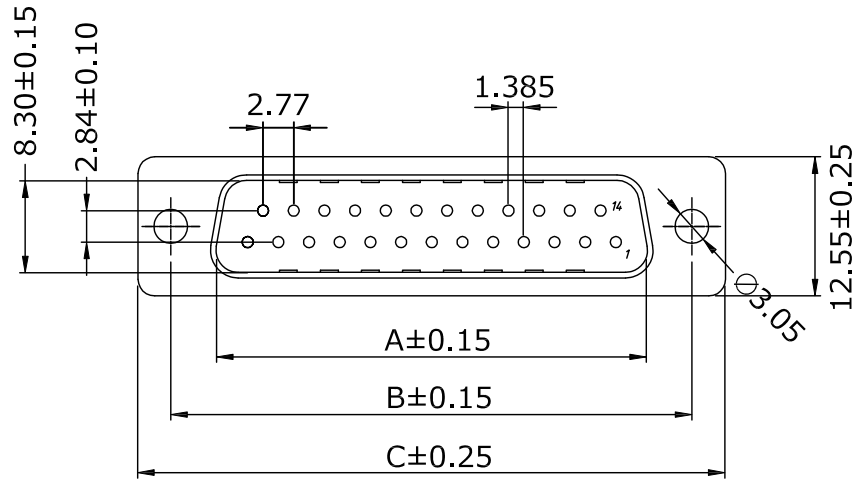
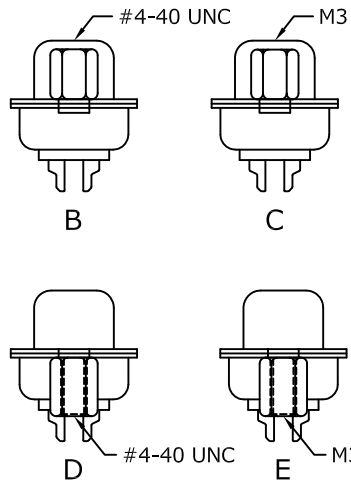
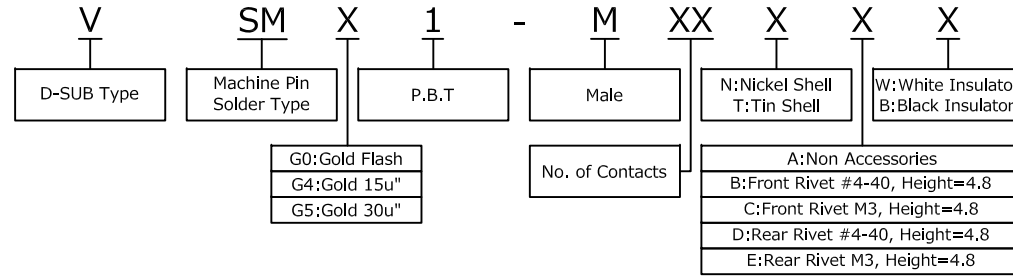
### SPECIFICATIONS

Current Rating: 5Amps  
 Contact Resistance: 30m Ω Max  
 Insulation Resistance: 1000M Ω Min  
 Withstanding Voltage: 500V AC for 1 minute  
 Temperature Range: -55°C to +105°C

### MATERIAL

Contact: Brass  
 Insulator: PBT+30% G.F., UL94V-0  
 Shell: SPCC

### ORDER INFORMATION



No. of contact	Dimensions			
	A	B	C	D
09	16.92	24.99	30.81	19.20
15	25.25	33.32	39.20	27.70
25	38.96	47.04	53.04	41.10
37	55.42	63.50	69.40	57.30

<p>Morecrafts Technology                  TEL: +886-2-2966-1326                  FAX: +886-2-2966-1352                  www.morecrafts.com.tw</p>	PART NO.	VSMX1-MXXXXXX	DRAWN	Andrew				
	DRAWING NO.	VSMX1-MXXXXXX	CHECKED	Claudia				
	DATE	2023/07/04	APPROVED	Brian				
TITLE:	D-SUB Machine Pin solder type	REV. A0	TOLERANCE	.X ±0.25 .XX ±0.20	SCALE	1:1	UNIT	mm