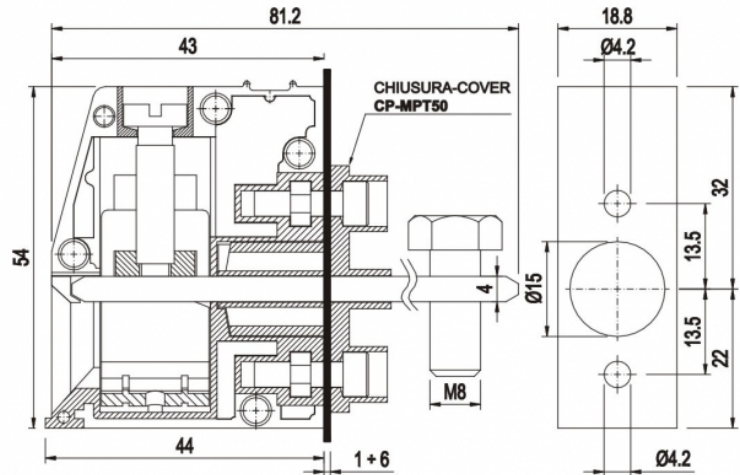
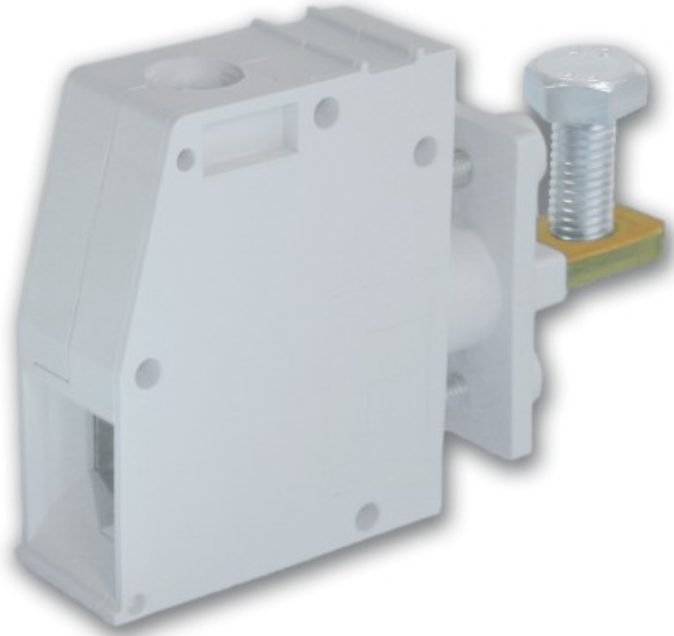


MPT5018

euroclamp
**GENERAL INFORMATIONS**

pitch:	18,8 mm
housing height:	54,00 mm
housing depth:	43 mm
dimensional class:	n/a
wire section:	50 mm ² / 1/0 AWG
clamp opening size:	∅15 mm
wire stripping:	max 20 mm
operating temperature:	-40°C ÷ +130°C

ELECTRICAL CHARACTERISTICS

current:	150A
voltage:	1000V
test voltage:	3.5 kVrms/60s

MECHANICAL CHARACTERISTICS

screw:	M6
max. torque:	6 Nm / 54 in.lbs
rec. torque (bar):	6 Nm / 54 in.lbs

APPROVALS DATA

current:	-	-	UL 1059
voltage:	-	-	150A factory / A field
wire section:	-	-	600V
torque:	-	-	1/0÷6AWG
FILE:	-	-	54Lb-in
			E178356

MATERIALS

housing:	PA - UL 94 V0
screw:	Galvanized steel
clamp/spring:	Nickel copper alloy
terminal:	Copper alloy

AVAILABLE COLOURS

other colours: upon request

poles	P/N	pcs/pack	W [Kg]*	W [Kg]*
--------------	------------	-----------------	----------------	----------------

