

## 0.5 mm SMT Board-to-Board Connector System

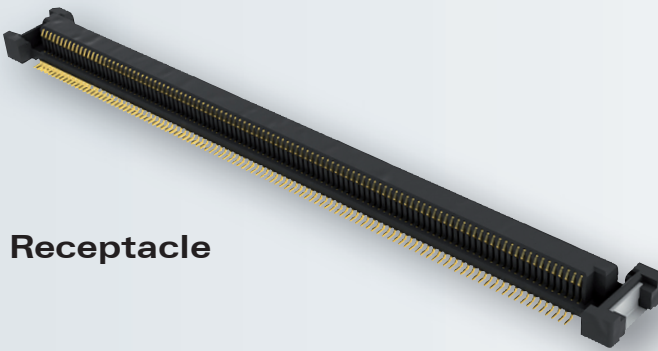
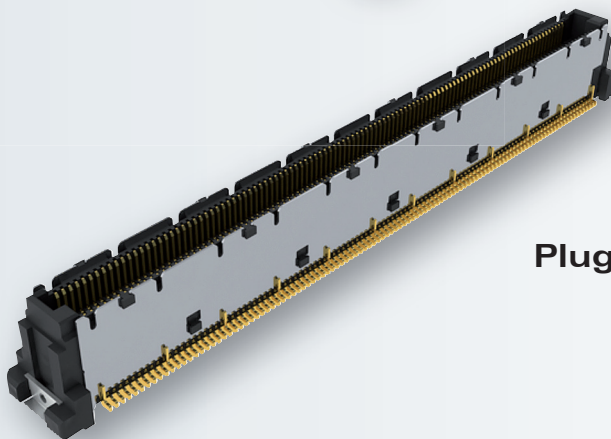
Meets the requirements of

**COM**  **Express**<sup>®</sup> and **CoreExpress**<sup>®</sup>

ept's **Colibri** connector is a shielded, 2-row, SMT interconnect system in 0.5 mm pitch.

Both connectors, Plug and Receptacle, are available with 8 mm stacking height and 220 pins. They are designed to meet requirements according to specifications not only of PICMG COM Express®, but also of SFF-SIG Core Express®.

Additional versions with flexible pin count as well as multiple stack heights will be available consecutively.

**Receptacle****Plug**

### Key Features

- Meets the requirements of PICMG COM Express® and SFF-SIG CoreExpress®
- Intermatability with available connectors in the market
- Robust connector design
- Plug connector with ground shield
- Receptacle connector with ground pins
- Custom configurations in pin count
- Multiple stack heights

### Applications

- High density board designs
- COM Express®
- CoreExpress®
- Board-to-Board
- Mezzanine Add-on Cards

#### Important Notice:

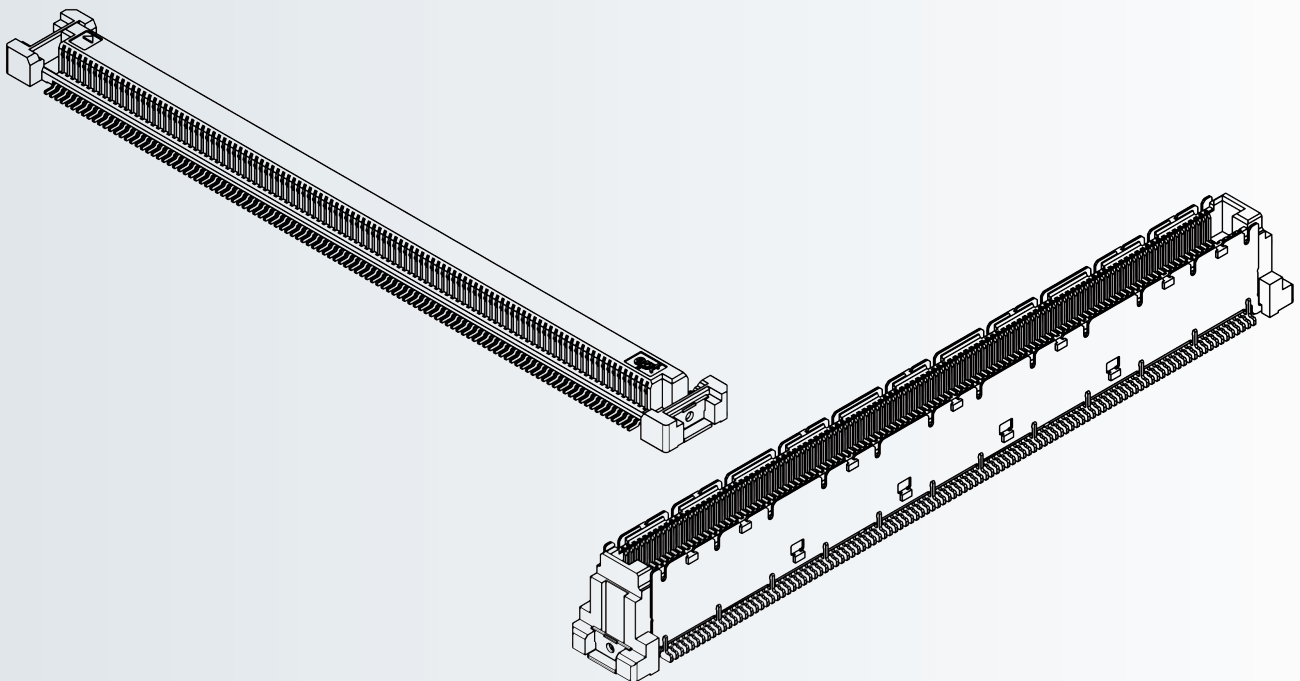
Specifications are subject to change without notice. All statements, information, and data given herein are believed to be accurate and reliable but are presented without guarantee, warranty, or responsibility of any kind expressed or implied. Statements or suggestions concerning possible use of our products are made without representation or warranty that any such use is free of patent infringement and are not recommendations to infringe any patent. The user should not assume that all safety measures are indicated or that other measures may not be required.

## 0.5 mm SMT Board-to-Board Connector System

### Technical Specifications

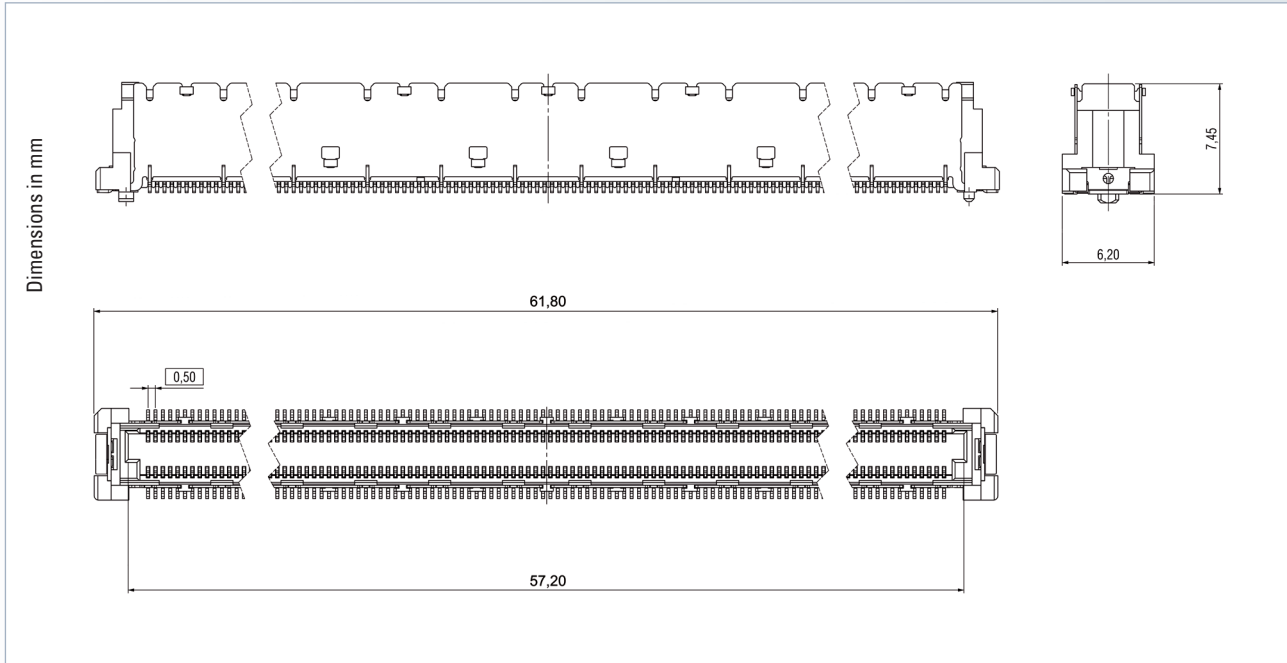
## Technical Specifications

Technical specifications	0.5 mm SMT Board-to-Board Connector System	
	Plug	Receptacle
Specification	PICMG® COM.0	
Operating temperature range	– 40 °C to + 85 °C	
Current carrying capacity	max. 0.5 A	
Operational voltage	50 VAC	
Contact resistance	max. 75 mΩ	
Insulation resistance	> 100 MΩ	
Dielectrical withstanding voltage	200 VAC	
Durability	30 cycles	
Engaging force per pin	max. 0.9 N	
Seperating force per pin	min. 0.1 N	
Insulator material	LCP, UL 94 V-0	
Contact	Copper alloy	
Environment/ approvals	RoHS compliant/UL 94 V-0	
Soldering temperature	260 °C per J-STD-020	
Coplanarity	max. 0.1 mm	
Data transfer rate	≥ 5 GBps	



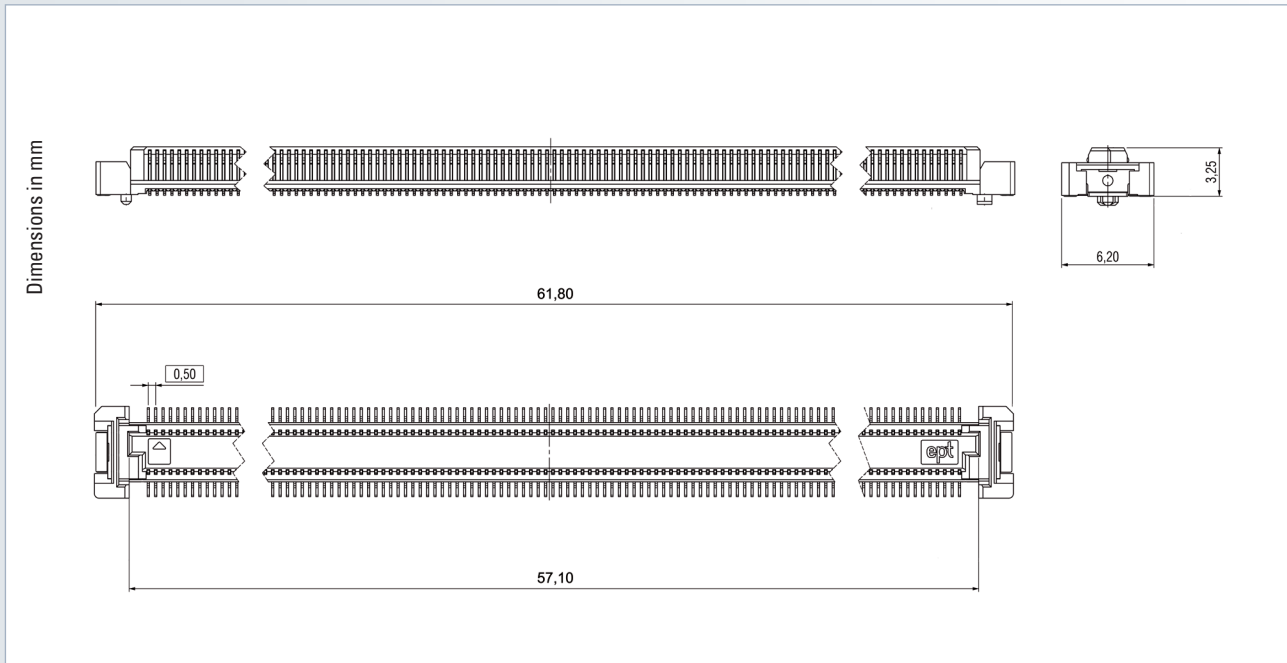
# 0.5 mm SMT Board-to-Board Connector System

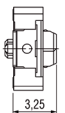
Plug



No. of contacts	Height
Part number	
220	401-55101-51
440	401-55501-51

Options	On request	Note
– Pick & place cap for 220 contacts version	– Other contact numbers – Other stack heights	– For detailed information see customer drawing



No. of contacts	Height
	
Part number	
220	402-51101-51
440	402-51501-51

Options	On request	Note
– Pick & place cap for 220 contacts version	– Other contact numbers – Other stack heights	– For detailed information see customer drawing



**Good connections  
bear a name: ept**

If you are looking for a supplier of **electronic connection technology** with innovative product ideas and superior processing technology, there's no getting around ept.

We offer you **comprehensive fully integrated manufacturing solutions**, with our **wide range of connectors and processing technology** from a single source.

As an independent family business with decades of experience, we can offer **technical expertise** and the **highest quality standard**. ept combines creativity and precision, when it comes to your **individual product applications and process solutions**.

At our locations in Germany (Peiting, Buching, Augsburg), the Czech Republic, the USA and China and in our international sales network, more than **700 employees worldwide** are responsible for top-notch **development, production and service work**.

We are looking forward to working with you.

Your ept team

**ept GmbH**

Bergwerkstr. 50  
86971 Peiting, Germany  
Tel. +49 (0) 88 61 / 25 01 0  
Fax +49 (0) 88 61 / 55 07  
sales@ept.de

**ept, inc.**

805 Liberty Way  
Chester, Virginia 23836, USA  
Tel. +1 804 530 0820  
800 323 2568  
Fax +1 804 530 0837  
sales@eptusa.com

**ept Electronic Precision  
Technology (Shanghai) Ltd.**

6F Building 37,  
No. 333 Qin Jiang Road  
Shanghai, P. R. China  
Post code: 20 02 33  
Tel. +86 (0) 21-54 26-09 88  
Fax +86 (0) 21-64 95-39 49  
sales@eptcn.com