

GP-C831

Quick Printing Guide (for Microsoft[®] Word 2010)

Trademarks

EPSON is a registered trademark of Seiko Epson Corporation.

Exceed Your Vision is registered trademark or trademark of Seiko Epson Corporation.

Microsoft® is registered trademarks of Microsoft Corporation in the United States and other countries.

In this manual, the Microsoft® Word GUI is used with the permission of Microsoft Corporation.

All other trademarks are the property of their respective owners and used for identification purpose only.

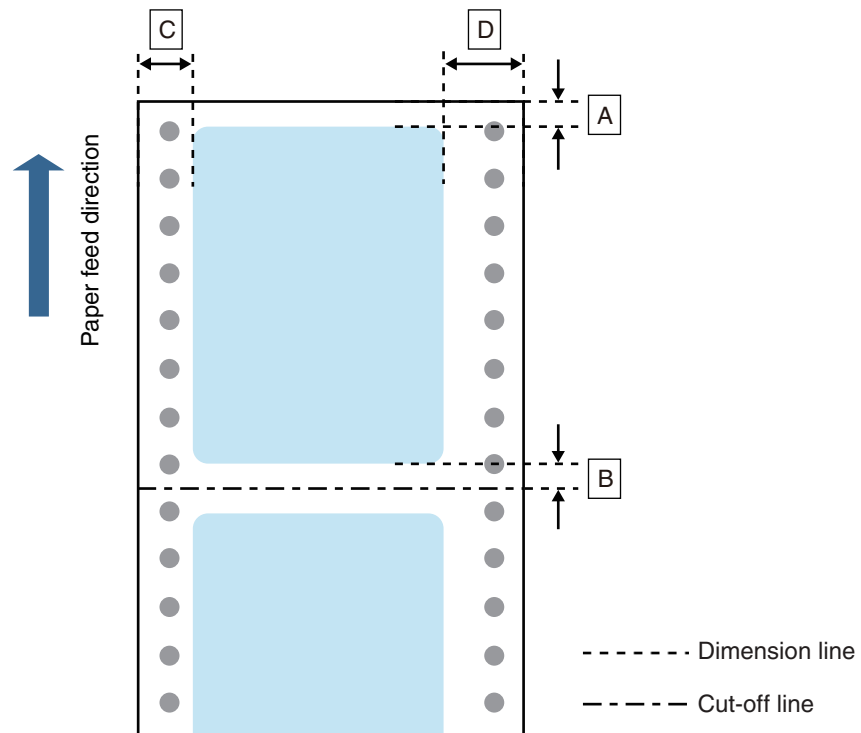
© Seiko Epson Corporation 2015. All rights reserved.

Overview

This manual contains the necessary information for printing from Microsoft® Word 2010 using GP-C831 printer driver Ver.2.1.0.0.

Here we will use the following print data as an example. Change the content based on the actual use environment.

- Media Type: Plain Label
- Paper Size: 240 (width) x 300 (height) mm
- Label Size: 200 (width) x 290 (height) mm
- Margins: Top (A): 5 mm, Bottom (B): 5 mm, Left (C): 15 mm, Right (D): 25 mm



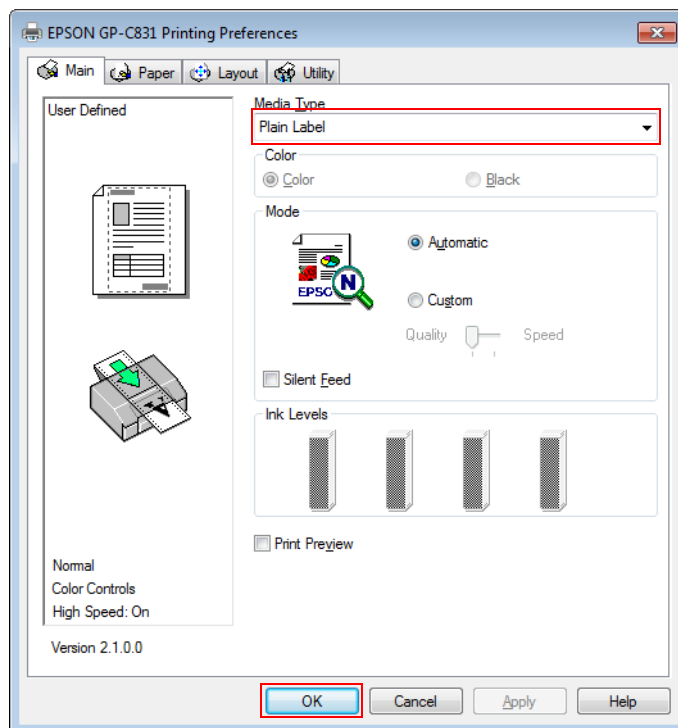
Preparation of the Printer

- 1 Insert the supplied CD into the computer, and set up the printer according to the setup tool instructions.

Note:

The printer driver is installed automatically if it has not been installed.

- 2 Specify the Media Type.
Once setup is complete, display the printer driver, specify "Plain Label" for the media type, then click (OK).



Setting of Barcode Font

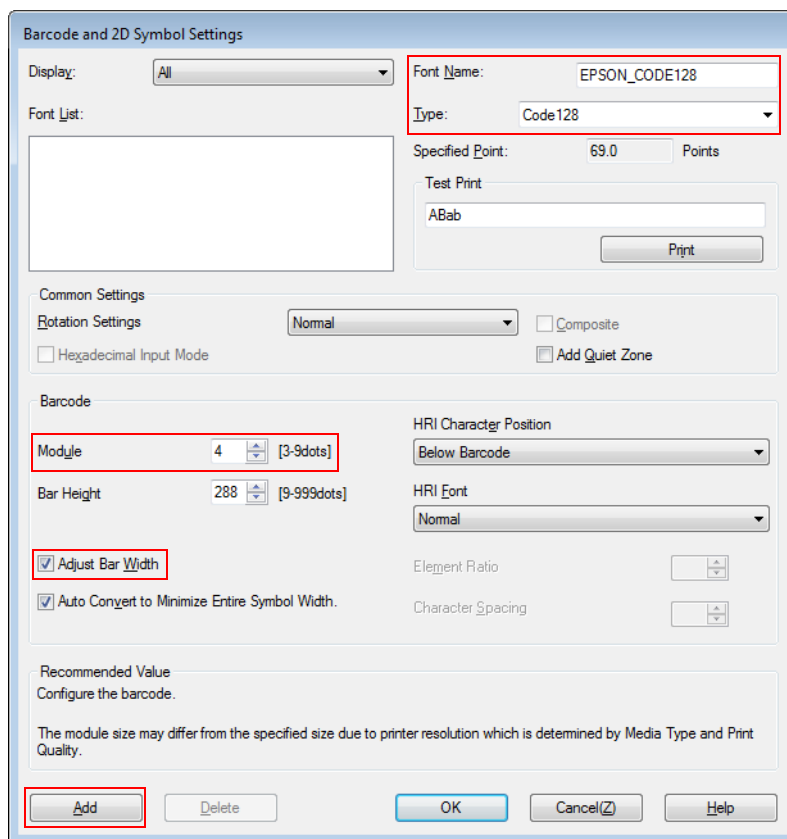
Once the printer is ready, set the barcode font in the printer driver.

Caution:

When printing barcodes, there are recommended conditions depending on the media type. If you do not use the recommended conditions, the printed barcode may not be scanned as expected. For the recommended conditions, see the Appendix.

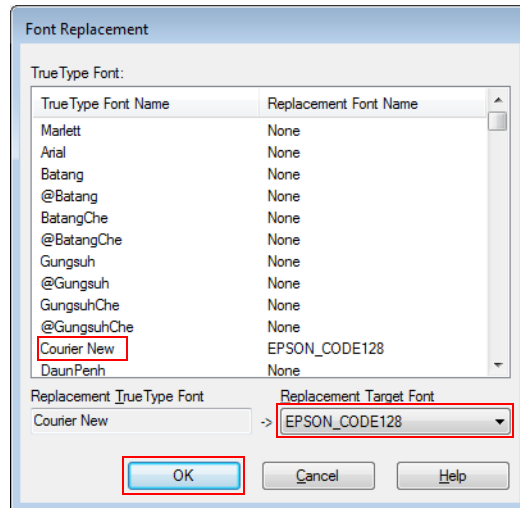
- 1 Register the barcode font.
In (Barcode and 2D Symbol Settings), specify the settings as follows, then click (Add).

| Setting Items | Setting Value |
|------------------|----------------|
| Font Name | EPSON_CODE128 |
| Type | Code128 |
| Module | 4 dot or more |
| Adjust Bar Width | Enable (check) |



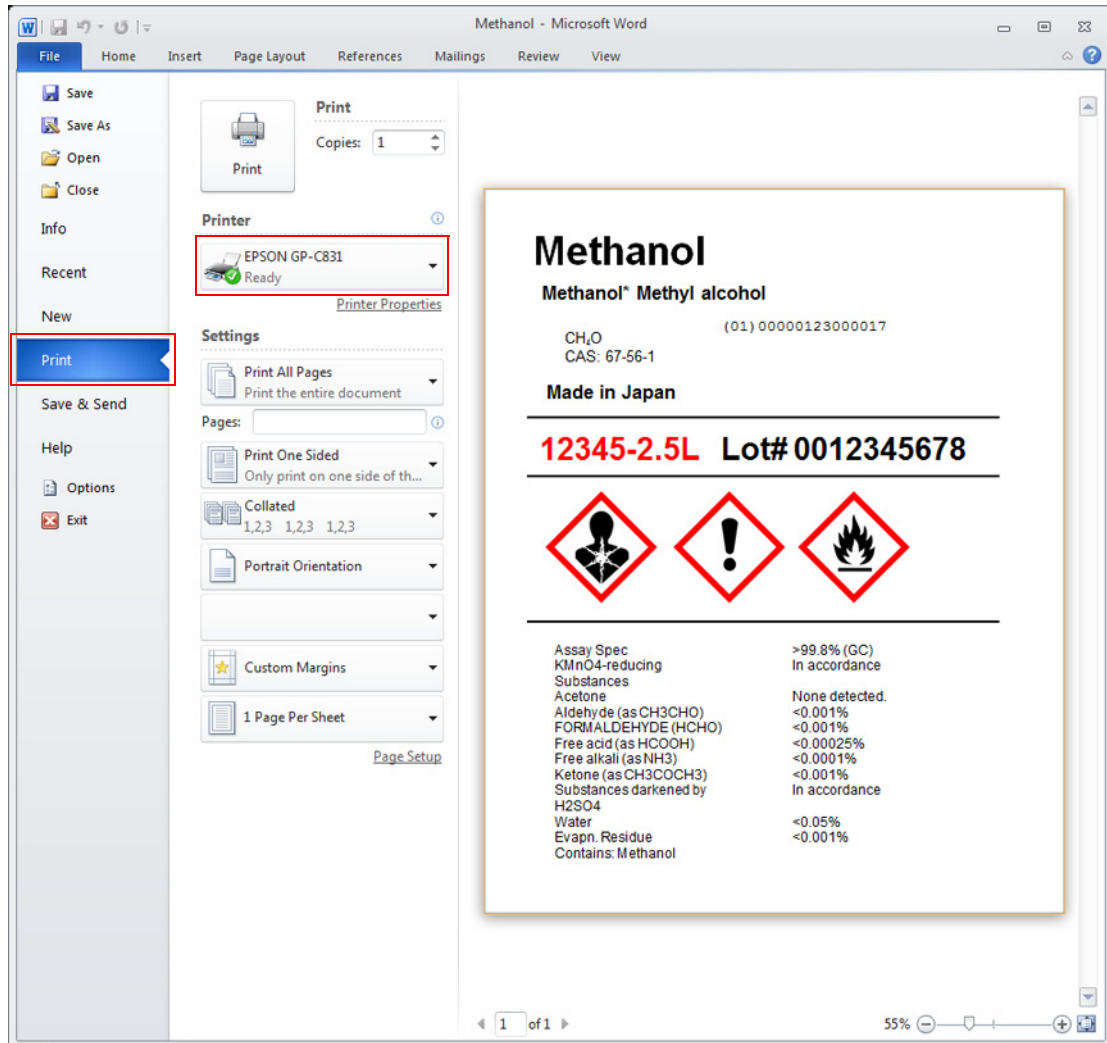
- 2 The registered font is displayed on the (Font List).
Click (OK).

- 3** Replace the font.
In (Font Replacement), replace (Courier New) (or any TrueType font you want to replace) with (EPSON_CODE128) (the barcode font you added in Step 1), then click (OK).



Preparation of Microsoft® Word 2010

- 1 Start up Microsoft® Word 2010 and create a new media layout.
- 2 Specify the printer.
Click (File), then (Print), and then select (EPSON GP-C831) in (Printer).

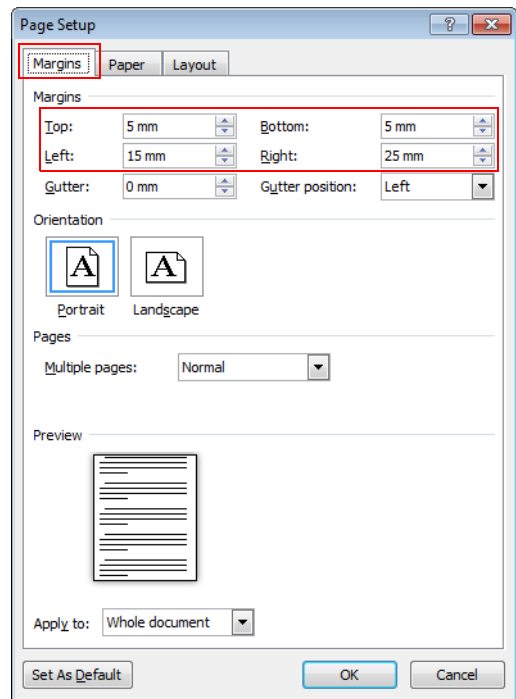
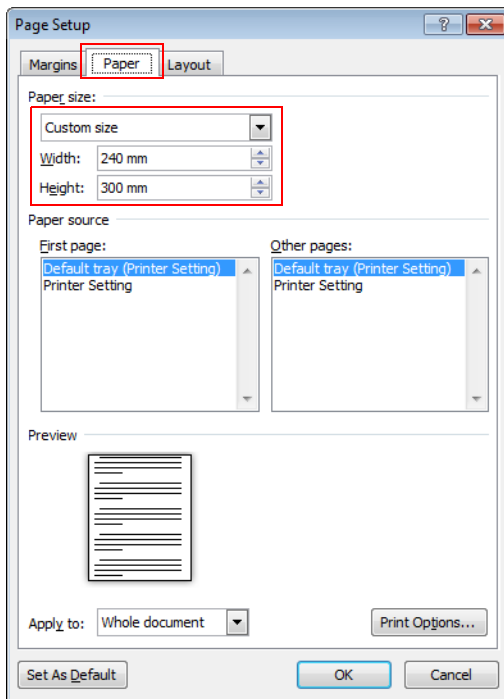


3

Specify the page size.

Click (File), then (Print), then select (Page Settings). Perform the following settings then click (OK).

| Setting items | | Setting Value | |
|---------------|------------|---|-------|
| (Paper) tab | Paper size | Select (Customize), then specify the following. <ul style="list-style-type: none"> • Width: 240 mm • Height: 300 mm | |
| (Margins) tab | Margins | Top | 5 mm |
| | | Bottom | 5 mm |
| | | Left | 15 mm |
| | | Right | 25 mm |



Creating Label Design

When printing a barcode, input the data you want to make a barcode from as text data, then for the font, specify [Courier New] (the font replaced on Setting of Barcode Font).

Make sure you have the top and bottom margins of 1.5 mm and more, and left and right margins of 2.0 mm and more inside the label size.

Cautions:

- When inputting barcode data, do not begin a new line using the replaced font.
- The maximum printable width for GP-C831 is 216.2 mm.
- Data placed in the position more than 216.2 mm from the left edge of the media is not printed.

Methanol
Methanol* Methyl alcohol

CH₃O
CAS: 67-56-1

Made in Japan

12345-2.5L Lot# 0012345678

| | |
|---|----------------|
| Assay Spec | >99.8% (GC) |
| KMnO ₄ -reducing Substances | In accordance |
| Acetone | None detected. |
| Aldehyde (as CH ₃ CHO) | <0.001% |
| FORMALDEHYDE (HCHO) | <0.001% |
| Free acid (as HCOOH) | <0.00025% |
| Free alkali (as NH ₃) | <0.0001% |
| Ketone (as CH ₃ COCH ₃) | <0.001% |
| Substances darkened by H ₂ SO ₄ | In accordance |
| Water | <0.05% |
| Evapn. Residue | <0.001% |
| Contains: Methanol | |

Barcode Data: (01)00000123000017

Picture Data: [Hazard Pictograms]

Text Data: [Assay Specifications Table]

Note:

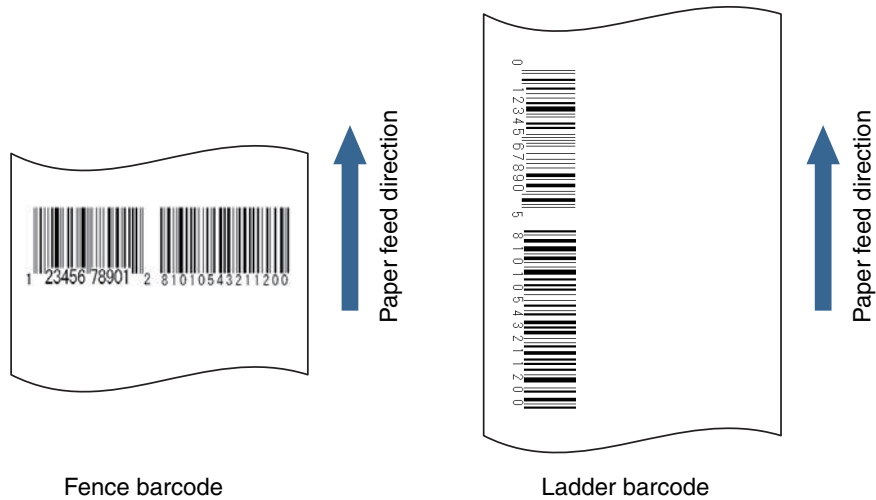
The barcode image is not displayed on the Microsoft® Word 2010 screen. If you want to check the barcode image, use the preview function of the printer driver.

Appendix

Recommended conditions of the Barcode

| Barcode Direction | Media Type | Module | Element ratio * |
|-------------------|--|--------|-----------------|
| Fence | Plain Label | 4 | 2.5 |
| | Synthetic Label, Matte Label, Glossy Label | 3 | 2.7 |
| Ladder | Plain Label | 6 | 2.5 |
| | Synthetic Label, Matte Label, Glossy Label | | |

*: You can set the element ratio when the barcode type is CODE39, ITF, and Codabar.



Cautions:

- The above values are valid when using paper recommended by EPSON.
- Before using the barcode, print the barcode and check the scan quality.
- Ladder barcodes are subject to decreased scan quality due to missing dots or skewed ink drops. Therefore, we recommend using the fence barcode.
- When printing ladder barcodes, take measures against poor barcode scanning such as printing HRI characters.